



2020
CALIFORNIA CITIZENS
REDISTRICTING COMMISSION

DISTRICT MAPS CHANGE EVERY 10 YEARS. ADVOCATE FOR YOUR COMMUNITY!

#WeDrawTheLinesCA

The California Citizens Redistricting Commission is a group of Californians who are drawing district lines free of special interests, politics, or political influence. We need your input.



In November 2008, California voters passed the Voters FIRST Act, authorizing the creation of the Independent Citizens Redistricting Commission to draw new district lines for Congressional, State Senate, State Assembly and State Board of Equalization districts, taking the job out of the hands of the California Legislature and transferring it to the citizens. In 2010, the VOTERS FIRST Act for Congress added the responsibility of drawing Congressional districts to the Commission.

www.WeDrawTheLinesCA.org



Redistricting Can Empower Communities

One of the greatest powers that the people of California have is to elect their own representatives to conduct the business of their government. How the district boundaries are drawn can make the difference between empowering and maximizing your voice or minimizing and muting it. The independent California Citizens Redistricting Commission is committed to drawing fair districts that reflect the best interests of the people, not the incumbent politicians.

Speaking up about your community is critical to ensuring district lines are drawn to keep your community whole to the extent possible and grouped with nearby communities with similar interests. This ensures that your voice is heard by your elected leaders when making such decisions as the quality and funding of your child's education or determining your tax rates.

Tell Us About Your Community of Interest

- Where is your community located (city/county)? Be as specific as possible about the boundaries of where your community located.
- Why should your community be kept together for fair and effective representation?
- What nearby areas does your community want to, or not want to, be grouped with?

Describing your COI is the first step to identifying where you want district borders to begin and end.

See what your fellow Californians are saying here:

https://www.wedrawthelinesca.org/public_input

www.WeDrawTheLinesCA.org



READY TO TELL US ABOUT YOUR COMMUNITY?



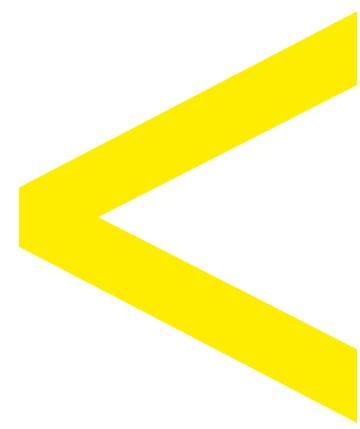
Map it online at:

www.DrawMyCACommunity.org



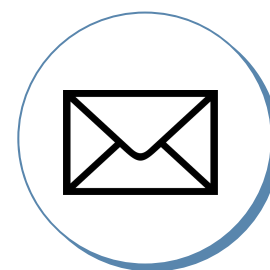
Speak at a meeting:

www.WeDrawTheLinesCA.org/meetings



Send us an e-mail:

VotersFirstAct@crc.ca.gov



Mail it in:

721 Capitol Mall, Suite 260
Sacramento, CA 95814

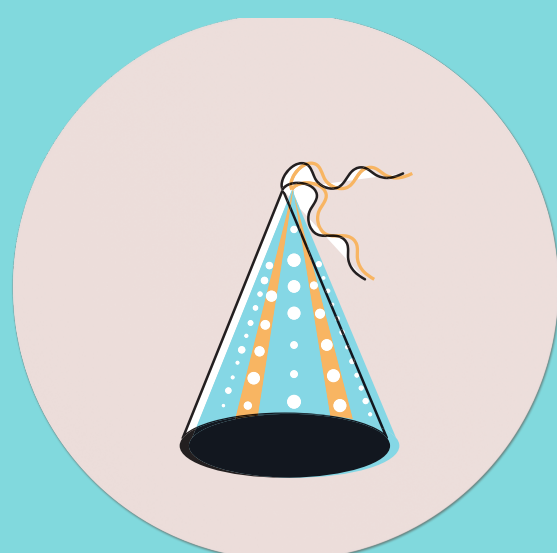
READY TO ENGAGE?



SUBSCRIBE TO OUR MAILING LIST AND SOCIAL MEDIA TOOLKIT

Receive e-blasts and the Commission's weekly social media toolkit to help us spread the word.

https://www.wedrawthelinesca.org/sign_up



HOST A VIEWING PARTY

Gather members, constituents and community to watch a Commission meeting, Redistricting Basics video or COI Tool Training Video

https://www.youtube.com/channel/UCMKfuZnixpNCxte_Qh-Me4Q

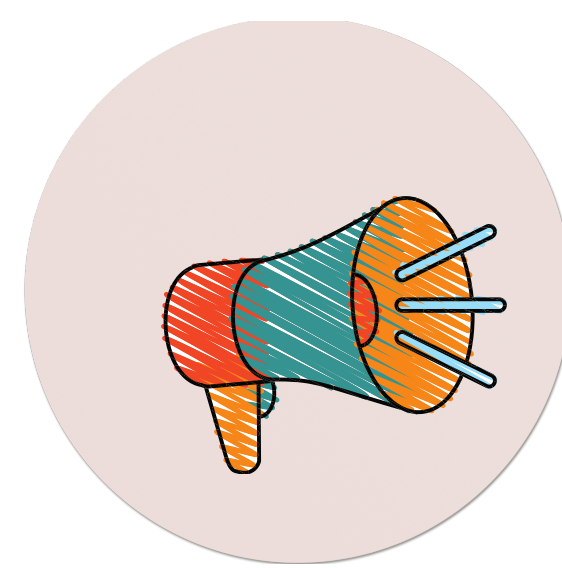
<https://www.youtube.com/channel/UCfTVZHU730re3jflfCfcPg>



LIKE US, FOLLOW US, SUBSCRIBE

Follow us on social media
(Facebook/Twitter/Instagram/Linkedin/YouTube).

[@WeDrawTheLinesCA](https://www.facebook.com/weDrawTheLinesCA)



SPREAD THE WORD

Share the Commission's materials in 14 languages. Help us get input from Californians who speak any language from Arabic and Armenian to Tagalog and Vietnamese.

https://www.wedrawthelinesca.org/outreach_materials

www.WeDrawTheLinesCA.org



SAMPLE SOCIAL MEDIA POSTS

Why should I care about redistricting?



FACEBOOK

One of the greatest powers that the people of California have is to elect their own representatives to conduct the business of their government. How the district boundaries are configured can make the difference between empowering and maximizing the voters' voices or minimizing and muting those voices.

Learn more at: www.WeDrawTheLinesCA.org or provide input directly at: wwwDrawMyCACommunity.org

How do I get involved?



TWITTER

During a Public Meeting. You can view live meetings here: <http://videoss.com/CRC/>

Electronically: email: VotersFirstAct@crc.ca.gov OR by visiting: DrawMyCACommunity.org.

By Mail: 721 Capitol Mall, Suite 260, Sacramento, 95814



What are Communities of Interest (COI)



INSTAGRAM

When drawing maps, we have to be mindful of Communities of Interest. We can obtain the city and county information, but we need the communities of interest information from Californians. Communities of Interest are defined as a concentrated population which shares common social and economic interests that should be included within a single district for purposes of its effective and fair representation. Visit us at: www.WeDrawTheLinesCA.org or provide input directly at: wwwDrawMyCACommunity.org. #wedrawthelines

@WeDrawtheLinesCA

FOLLOW & LIKE

FOLLOW & LIKE

FOLLOW & LIKE

FOLLOW & LIKE

FOLLOW & LIKE



LINKEDIN

Connect with the 2020 #California Citizens #Redistricting Commission (CRC) on social media! Like them on Facebook, follow on Twitter, Instagram @wedrawthelines, LinkedIn and subscribe to their YouTube Channel. Visit us at: www.WeDrawTheLinesCA.org or provide input directly at: wwwDrawMyCACommunity.org #wedrawthelines #California #Citizens #Redistricting

Sample Newsletter Article



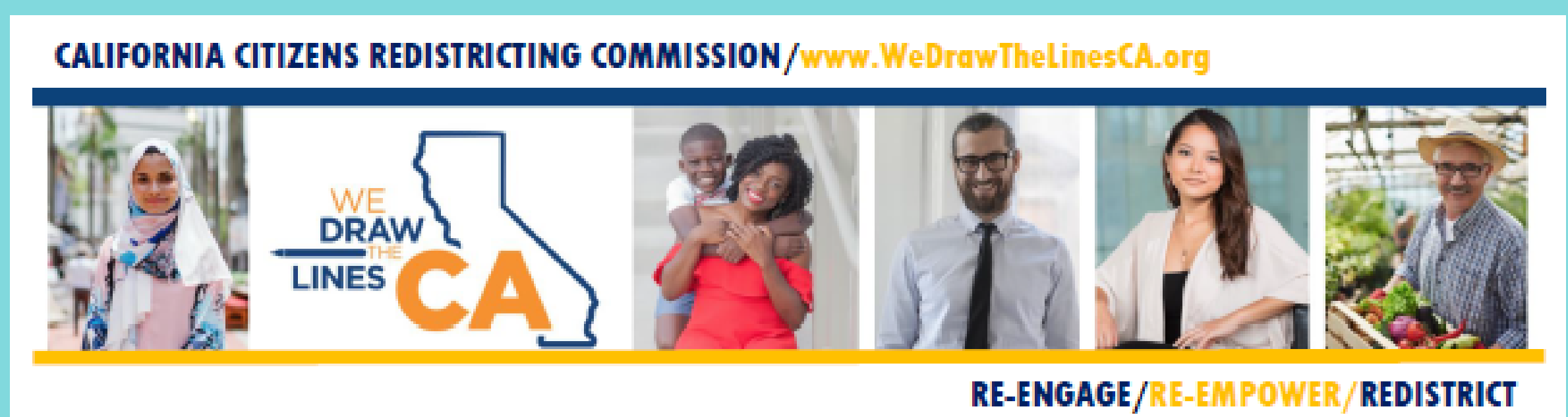
California voters authorized the creation of the Commission when they passed the VOTERS FIRST Act (Act) in 2008. It authorized the Commission to draw the new district lines. In 2010, the Congressional Voters FIRST Act added the responsibility of drawing Congressional districts to the Commission.

Every 10 years, after the federal government publishes updated census information, California must redraw the boundaries of its Congressional, State Senate, State Assembly and State Board of Equalization districts, so that the districts correctly reflect the state's population.


One of the greatest powers that the people of California have is to elect their own representatives to conduct the business of their government. How the district boundaries are configured can make the difference between empowering and maximizing the voters' voices or minimizing and muting those voices.

Redistricting has been used at times to exclude communities from political power. By fully participating in and monitoring the upcoming redistricting process, more communities may have the opportunity to elect candidates of their choice. Speaking up about your community is critical to help keep your community whole to the extent possible. This ensures that your voice is heard by your elected leaders when making decisions such as the quality and funding of your child's education or determining your tax rates.

To find ways to get involved in the process, please visit the California Citizens Redistricting website at: www.WeDrawTheLinesCA.org. To provide input directly to the Commission, please visit: www.DrawMyCACommunity.org.



MATERIALS



6 Things to Consider When Drawing the Lines

2020 CALIFORNIA CITIZENS REDISTRICTING COMMISSION

- 1 Equal Population**
Districts must be of equal population to comply with the US Constitution.
- 2 Voting Rights Act**
Districts must comply with the Voting Rights Act to ensure that minorities have an equal opportunity to elect representatives of their choice.
- 3 Contiguity**
Districts must be drawn so that all parts of the district are connected to each other.
- 4 Communities of Interest**
Districts must minimize the division of cities, counties, neighborhoods, and communities of interest to the extent possible.
- 5 Geographically Compact**
Districts should be geographically compact such that nearby areas of population are not bypassed for more distant populations. This requirement refers to density, not shape.
- 6 Nesting Districts**
Where practicable each Senate District should be comprised of two complete and adjacent Assembly Districts and Board of Equalization districts shall be composed of 10 complete and adjacent State Senate Districts.

For more information about the California Citizen Redistricting Commission, visit us at: WedrawTheLinesCA.org

Line Drawing Criteria



Outreach Zones

Zone	Counties	Commissioners
1	Alameda, Contra Costa, Merced, San Francisco, San Joaquin, Santa Clara, Solano	Commissioner Tracy
2	Alameda, Contra Costa, Merced, San Francisco, San Joaquin, Santa Clara, Solano	Commissioner Chen
3	Alameda, Contra Costa, Merced, San Francisco, San Joaquin, Santa Clara, Solano	Commissioner Lee
4	Alameda, Contra Costa, Merced, San Francisco, San Joaquin, Santa Clara, Solano	Commissioner Torres
5	Alameda, Contra Costa, Merced, San Francisco, San Joaquin, Santa Clara, Solano	Commissioner Torres
6	Alameda, Contra Costa, Merced, San Francisco, San Joaquin, Santa Clara, Solano	Commissioner Torres
7	Alameda, Contra Costa, Merced, San Francisco, San Joaquin, Santa Clara, Solano	Commissioner Torres
8	Alameda, Contra Costa, Merced, San Francisco, San Joaquin, Santa Clara, Solano	Commissioner Torres
9	Alameda, Contra Costa, Merced, San Francisco, San Joaquin, Santa Clara, Solano	Commissioner Torres
10	Alameda, Contra Costa, Merced, San Francisco, San Joaquin, Santa Clara, Solano	Commissioner Torres
11	Alameda, Contra Costa, Merced, San Francisco, San Joaquin, Santa Clara, Solano	Commissioner Torres
12	Alameda, Contra Costa, Merced, San Francisco, San Joaquin, Santa Clara, Solano	Commissioner Torres
13	Alameda, Contra Costa, Merced, San Francisco, San Joaquin, Santa Clara, Solano	Commissioner Torres
14	Alameda, Contra Costa, Merced, San Francisco, San Joaquin, Santa Clara, Solano	Commissioner Torres
15	Alameda, Contra Costa, Merced, San Francisco, San Joaquin, Santa Clara, Solano	Commissioner Torres
16	Alameda, Contra Costa, Merced, San Francisco, San Joaquin, Santa Clara, Solano	Commissioner Torres
17	Alameda, Contra Costa, Merced, San Francisco, San Joaquin, Santa Clara, Solano	Commissioner Torres
18	Alameda, Contra Costa, Merced, San Francisco, San Joaquin, Santa Clara, Solano	Commissioner Torres
19	Alameda, Contra Costa, Merced, San Francisco, San Joaquin, Santa Clara, Solano	Commissioner Torres
20	Alameda, Contra Costa, Merced, San Francisco, San Joaquin, Santa Clara, Solano	Commissioner Torres
21	Alameda, Contra Costa, Merced, San Francisco, San Joaquin, Santa Clara, Solano	Commissioner Torres
22	Alameda, Contra Costa, Merced, San Francisco, San Joaquin, Santa Clara, Solano	Commissioner Torres
23	Alameda, Contra Costa, Merced, San Francisco, San Joaquin, Santa Clara, Solano	Commissioner Torres
24	Alameda, Contra Costa, Merced, San Francisco, San Joaquin, Santa Clara, Solano	Commissioner Torres
25	Alameda, Contra Costa, Merced, San Francisco, San Joaquin, Santa Clara, Solano	Commissioner Torres
26	Alameda, Contra Costa, Merced, San Francisco, San Joaquin, Santa Clara, Solano	Commissioner Torres
27	Alameda, Contra Costa, Merced, San Francisco, San Joaquin, Santa Clara, Solano	Commissioner Torres
28	Alameda, Contra Costa, Merced, San Francisco, San Joaquin, Santa Clara, Solano	Commissioner Torres
29	Alameda, Contra Costa, Merced, San Francisco, San Joaquin, Santa Clara, Solano	Commissioner Torres
30	Alameda, Contra Costa, Merced, San Francisco, San Joaquin, Santa Clara, Solano	Commissioner Torres
31	Alameda, Contra Costa, Merced, San Francisco, San Joaquin, Santa Clara, Solano	Commissioner Torres
32	Alameda, Contra Costa, Merced, San Francisco, San Joaquin, Santa Clara, Solano	Commissioner Torres
33	Alameda, Contra Costa, Merced, San Francisco, San Joaquin, Santa Clara, Solano	Commissioner Torres
34	Alameda, Contra Costa, Merced, San Francisco, San Joaquin, Santa Clara, Solano	Commissioner Torres
35	Alameda, Contra Costa, Merced, San Francisco, San Joaquin, Santa Clara, Solano	Commissioner Torres
36	Alameda, Contra Costa, Merced, San Francisco, San Joaquin, Santa Clara, Solano	Commissioner Torres
37	Alameda, Contra Costa, Merced, San Francisco, San Joaquin, Santa Clara, Solano	Commissioner Torres
38	Alameda, Contra Costa, Merced, San Francisco, San Joaquin, Santa Clara, Solano	Commissioner Torres
39	Alameda, Contra Costa, Merced, San Francisco, San Joaquin, Santa Clara, Solano	Commissioner Torres
40	Alameda, Contra Costa, Merced, San Francisco, San Joaquin, Santa Clara, Solano	Commissioner Torres
41	Alameda, Contra Costa, Merced, San Francisco, San Joaquin, Santa Clara, Solano	Commissioner Torres
42	Alameda, Contra Costa, Merced, San Francisco, San Joaquin, Santa Clara, Solano	Commissioner Torres
43	Alameda, Contra Costa, Merced, San Francisco, San Joaquin, Santa Clara, Solano	Commissioner Torres
44	Alameda, Contra Costa, Merced, San Francisco, San Joaquin, Santa Clara, Solano	Commissioner Torres
45	Alameda, Contra Costa, Merced, San Francisco, San Joaquin, Santa Clara, Solano	Commissioner Torres
46	Alameda, Contra Costa, Merced, San Francisco, San Joaquin, Santa Clara, Solano	Commissioner Torres
47	Alameda, Contra Costa, Merced, San Francisco, San Joaquin, Santa Clara, Solano	Commissioner Torres
48	Alameda, Contra Costa, Merced, San Francisco, San Joaquin, Santa Clara, Solano	Commissioner Torres
49	Alameda, Contra Costa, Merced, San Francisco, San Joaquin, Santa Clara, Solano	Commissioner Torres
50	Alameda, Contra Costa, Merced, San Francisco, San Joaquin, Santa Clara, Solano	Commissioner Torres

California Citizens Redistricting Commission / 721 Capitol Mall, Suite 260, Sacramento, CA 95814 / WedrawTheLinesCA.org

Outreach Zones



YOU DEFINE YOUR COMMUNITIES

Every ten years, after the U.S. Census, California must redraw the boundaries of its Congressional, State Senate, State Assembly, and State Board of Equalization districts to reflect the new population data. The Voters FIRST Act gave this power to California citizens, ensuring that new and fair districts are drawn free of special interests, politics, or political influence.

The California Citizens Redistricting Commission will hold public meetings and accept public comment. This is your chance to become a part of creating fair and transparent district boundaries that serve the best interests of the people of California. In 2021, the Commission will work to develop and approve the district maps before the final maps are certified to the California Secretary of State.

WAYS TO GET INVOLVED

During a Public Meeting: In the spring and summer of 2021, the Commission will hold meetings where you can provide input by phone during the meeting, or electronically prior to the meeting. You can find out more about upcoming community input meetings by visiting our website at: www.WedrawTheLinesCA.org

Electronically: You can also provide input to the Commission by emailing: VotersFirstAct@crc.ca.gov, or by drawing your map using the "Draw My Community" tool and submitting it to the Commission by visiting: DrawMyCACommunity.org


In Writing: You can mail your paper documents to: California Citizens Redistricting Commission, 721 Capitol Mall, Suite 260, Sacramento, CA 95814

We urge you to visit our website and social media channels regularly for updates.

California Citizens Redistricting Commission
721 Capitol Mall, Suite 260, Sacramento, CA 95814
(916) 323-0323 - WedrawTheLinesCA.org

[Facebook](https://www.facebook.com/WedrawTheLinesCA) [Instagram](https://www.instagram.com/WedrawTheLinesCA) [YouTube](https://www.youtube.com/WedrawTheLinesCA)

CRC Flyer



2020 California Citizens Redistricting Commission

1 Register for a timeslot

- Registration opens 14 days before the meeting and closes at 5pm two days before the meeting.
- Go to the "Meetings" page of the website and identify the meeting you want to participate in: <https://www.wedrawthelinesca.org/meetings>
- Click on the COI Input Meeting link "Input Registration/Information".
- Pick a timeslot to register and click on the link for the timeslot.
- Fill out the form to submit your registration.
- When you submit the form you will see the following message:

"Thank you for requesting an appointment timeslot. You will receive an email the day before the CRC COI Input meeting with details on how to login to the meeting." You will also receive an automated email with a copy of your registration form.

- One day before the meeting you will receive an email with instructions on how to access the meeting.
- The instructions will advise you to join the meeting during your designated timeslot. When you join the meeting, please use the "raise hand" button at the bottom of your screen to enter the queue. When it is your turn to speak, the moderator will be identifying you by your assigned unique ID number.
- You will be reconnected to the session with the ability to enable your own video and/or audio.
- The Commission will be enforcing a three-minute time limit with a warning at 30 seconds and 15 seconds remaining.
- At the beginning of your input, please remind the mapper what area you would like to see on the screen.
- Please join the meeting at your registered timeslot.


2 If you prefer not to register

- If you prefer not to provide personal information for registration or all appointment timeslots are full, you can call in the day of the event to get in the queue to speak.
- Call in number for public input is (877)853-5247 and the passcode will be posted the day of the meeting.
- Watch meetings live: <http://videocast.com/CRC/>

3 Accessibility

- If you require an interpreter, requests for interpretation must be submitted at least five business days prior to the meeting. You can submit your request via email to interpreter.request@crc.ca.gov, on the appointment request form or call our offices at (916) 323-0323.
- Requests for disability-related modification or accommodation should be made at least five business days prior to the meeting and should be submitted in writing either by mail at 721 Capitol Mall, Suite 260, Sacramento, California 95814 or by email at votersfirstact@crc.ca.gov.
- All COI input meetings will have ASL and closed captioning.

Steps for joining Communities of Interest (COI) meetings



Steps to Participate



2020 CALIFORNIA CITIZENS REDISTRICTING COMMISSION

Communities of Interest (COI) Input Meetings

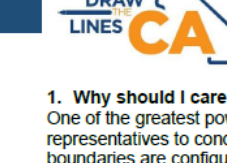
Your input is vital to the success of the Commission. We need your Communities of Interest information to respect the boundaries of your communities during the redistricting process. Join us at one of our upcoming COI input meetings. For event information, visit our website: <https://www.wedrawthelinesca.org/meetings>

June 10, 2021 Meeting (Statewide) 12:00 P.M. – 8:00 P.M.	July 20, 2021 Meeting (Zone G) 4:00 P.M. – 8:00 P.M.
June 19, 2021 Meeting (Statewide) 9:00 A.M. – 5:00 P.M.	July 22, 2021 Meeting (Zone E) 4:00 P.M. – 8:00 P.M.
June 21, 2021 Meeting (Zone D) 10:00 A.M. – 6:00 P.M.	July 24, 2021 Meeting (Zone J) 10:00 A.M. – 2:00 P.M.
June 24, 2021 Meeting (Zone I) 11:00 A.M. – 7:00 P.M.	July 29, 2021 Meeting (Zone C) 4:00 P.M. – 8:00 P.M.
June 26, 2021 Meeting (Zone H) 10:00 A.M. – 6:00 P.M.	July 30, 2021 Meeting (Zone H) 4:00 P.M. – 8:00 P.M.
June 28, 2021 Meeting (Zone C) 10:00 A.M. – 6:00 P.M.	July 31, 2021 Meeting (Zone I) 10:00 A.M. – 2:00 P.M.
July 1, 2021 Meeting (Zone A) 12:00 P.M. – 8:00 P.M.	August 4, 2021 Meeting (Zone F) 4:00 P.M. – 8:00 P.M. (Spanish/Punjabi)
July 8, 2021 Meeting (Zone J) 10:00 A.M. – 6:00 P.M.	August 9, 2021 Meeting (Zone B) 4:00 P.M. – 8:00 P.M. (Spanish)
July 10, 2021 Meeting (Zone K) 10:00 A.M. – 6:00 P.M.	August 12, 2021 Meeting (Zone H) 3:00 P.M. – 7:00 P.M. (Spanish/Armenian/Farsi/Khmer)
July 12, 2021 Meeting (Zone F) 10:00 A.M. – 6:00 P.M.	August 13, 2021 Meeting (Zone K) 3:00 P.M. – 7:00 P.M. (Spanish/Tagalog/Arabic)
July 15, 2021 Meeting (Zone H) 4:00 P.M. – 8:00 P.M.	August 20, 2021 Meeting (Zone G) 2:00 P.M. – 6:00 P.M. (Spanish)
July 17, 2021 Meeting (Zone C) 10:00 A.M. – 2:00 P.M.	August 21, 2021 Meeting (Zone D) 9:00 A.M. – 1:00 P.M. (Spanish)
July 19, 2021 Meeting (Zone B) 2:00 P.M. – 6:00 P.M.	August 23, 2021 Meeting (Zone A) 3:00 P.M. – 7:00 P.M. (Spanish)

Language and Accessibility Requests:

- Meetings with a designated language will have interpretation in those languages provided automatically. Interpretation in additional languages must be requested.
- Requests for interpretation of public input must be submitted five business days prior to the meeting and can be submitted by email at interpreter.request@crc.ca.gov, on the registration form or by calling our offices at (916)323-0323.
- Requests for disability-related modification or accommodation should be made at least five business days prior to the meeting and should be submitted by email at: votersfirstact@crc.ca.gov or by calling our offices at (916)323-0323.

COI Input Meetings



2020 Citizens Redistricting Commission FAQs

1. Why should I care about redistricting?

One of the greatest powers that the people of California have is to elect their own representatives to conduct the business of their government. How the district boundaries are configured can make the difference between empowering and maximizing the voters' voices or minimizing and muting those voices. The independent California Citizens Redistricting Commission ("Commission") is committed to drawing fair districts that reflect the best interests of the people, not the incumbent politicians.

Speaking up about your community is critical to ensuring district lines are drawn to keep your community whole to the extent possible, and grouped with nearby communities with similar interests. This ensures that your voice is heard by your elected leaders when making such decisions as the quality and funding of your child's education or determining your tax rates.

Your input is valuable in shaping the new political boundaries.

2. How do I get involved?

There are several ways to provide input to the Commission.

During a Public Meeting: The Commission will hold hearings where you can provide input by phone during the meeting or electronically prior to the meeting. You can find out more about upcoming public input meetings by visiting the Meetings section of our website.

Electronically: You can also provide input to the Commission via the website by emailing: VotersFirstAct@crc.ca.gov or by drawing your map using the "Draw My Community" tool and submitting it to the Commission by visiting: DrawMyCACommunity.org


By Phone: (916) 323-0323

In Writing: You can mail your input to: California Citizens Redistricting Commission, 721 Capitol Mall, Suite 260, Sacramento, CA 95814

Through a Community-Based Organization (CBO): There are many CBOs that are working with communities and presenting input to the Commission in a collaborative manner.


California Citizens Redistricting Commission / 721 Capitol Mall, Suite 260, Sacramento, CA 95814 / WedrawTheLinesCA.org

CRC FAQs



YouTube player showing a video titled "CALIFORNIA REDISTRICTING BASICS" with the URL WedrawTheLinesCA.org. The video features a collage of diverse people and the WE DRAW LINES CA logo.

Redistricting Basics Video



YouTube player showing a video titled "Spanish Redistricting Basics" with the URL WedrawTheLinesCA.org. The video features a collage of diverse people and the WE DRAW LINES CA logo. Text overlay: "¿Cómo podemos empezar? >> El siguiente, por favor".

Spanish Redistricting Basics Video